

**SEA KING**

**OUTBOARD  
MOTOR**

**PARTS CATALOG**

MW 22

**9.2  
HORSEPOWER**

**MODEL  
VWB-299091**

Printed in U.S.A.

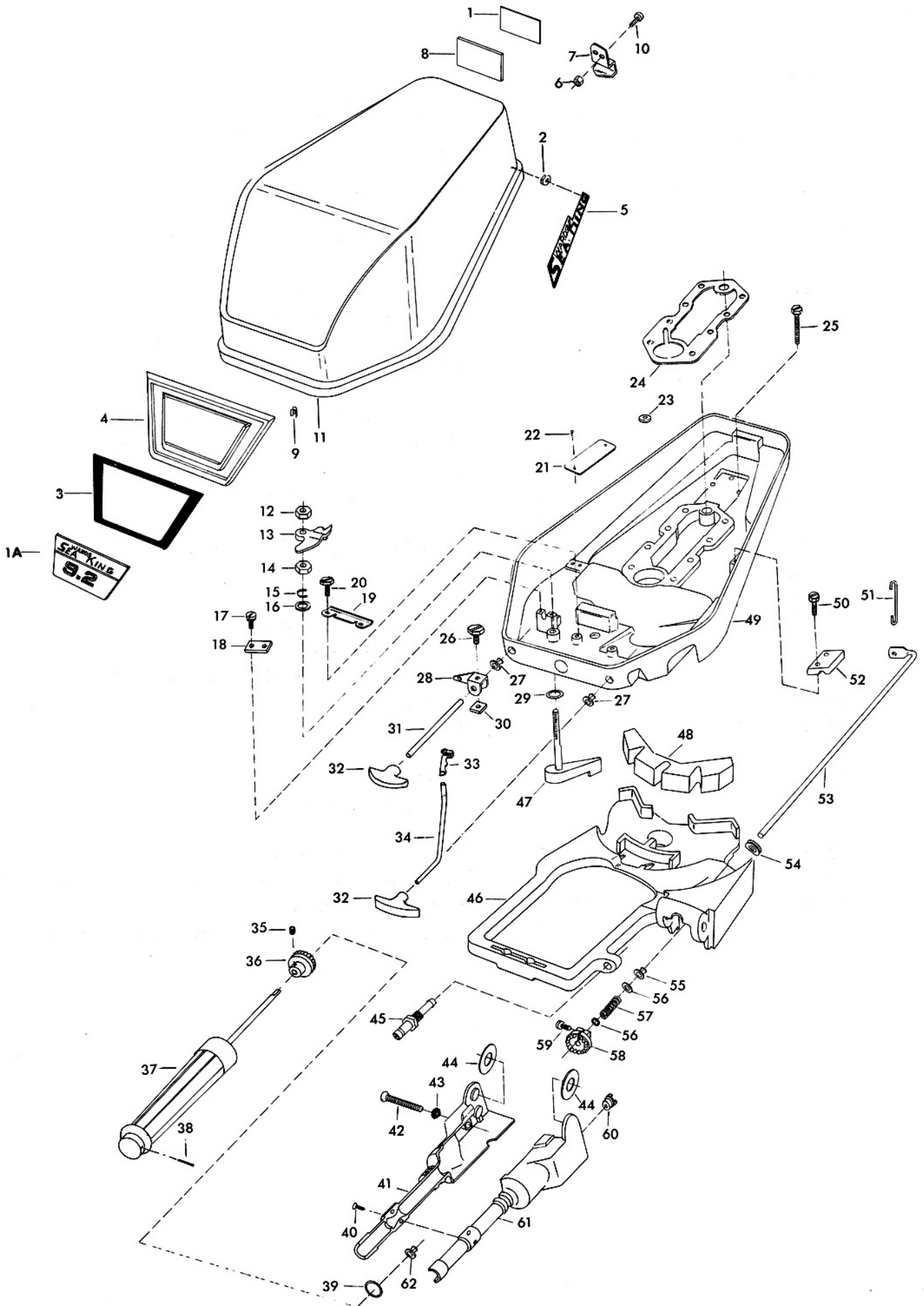
8/68

**SEA KING** — SOLD EXCLUSIVELY BY **MONTGOMERY WARD**

# Engine Cover and Support Plate

ILLUS. NO.	PART NO.	CTY.	DESCRIPTION	ILLUS. NO.	PART NO.	QTY.	DESCRIPTION
1	359528		Insert rear "9.2"	34	197503	1	Choke rod
1A	359512	1	Plate "9.2"	35	1614	1	Hex socket headless set screw, 1/4 - 20 x 1/4
2	9037	6	Fastener				
3	327203	1	Trim, wood grain	36	197691	1	Steering handle gear
4	327711	1	Engine cover plate	37	A197688-1	1	Grip, steering handle w/collar and shaft
5	352366	1	Name plate - "Sea King"				
6	7011	2	Elastic stop nut, 10 - 24	38	8542	1	Spring pin, S.S.
7	A199480-1	1	Retainer, engine cover w/screws	39	53795-1	1	Steering handle grip dampener
8	327180	1	Engine cover plate, rear	40	1606	2	Oval hd screw, 8 - 32 x 7/16
9	1753	18	Fastener	41	224576	1	Steering handle, starboard
10	1475	2	Fill hd screw, S.S., 10 - 24 x 1/2	42	1153	1	Flat hd screw, S.S., 1/4 - 20 x 1 - 7/8
11	A327712	1	Engine cover w/retainer and latch bracket	43	1609	1	Ext tooth lockwasher
12	1518	1	Hex nut, 5/16 - 18	44	197220	2	Nylon washer
13	89777-1	1	Latch cam, engine cover	45	197767-1	1	Fuel line bushing
14	1518	1	Hex nut, 5/16 - 18	46	197940-1	1	King pin mounting plate
15	73741	1	Retaining ring	47	A183763-1	1	Cover latch handle w/shaft
16	8032	1	Plain washer	48	197347	1	Shock mount upper
17	1436	2	Pan hd screw w/lockwasher, 10 - 24 x 7/16	49	197038-1	1	Support plate
18	197178	1	Retainer	50	1225	2	Hex slot hd screw, 10 - 24 x 5/8
19	197455-1	1	Starter rope guide	51	197510	1	Link, shaft to lever
20	1481	2	Hex slot hd screw, S.S., 1/4 - 20 x 9/16	52	197527	1	Bearing cap, magneto control shaft
21	A197395-2	1	Identification plate w/screws	53	197838	1	Magneto control shaft
22	1293	2	Rd hd drive screw, 2 x 3/16	54	183504	1	Grommet, magneto control shaft
23	53991-2	2	Grommet, shear pin	55	197813	1	Bearing, magneto control shaft
24	50279	1	Cylinder exhaust gasket				
25	1223	3	Hex slot hd screw, 1/4 - 20 x 1 - 1/8	56	183175	2	Washer
26	1558	1	Hex slot hd screw, 10 - 24 x 3/8	57	183300	1	Spring
27	197319	2	Bearing	58	183691-1	1	Magneto control shaft gear
28	78190	1	Idle adjustment arm	59	1642	1	Socket hd cap screw, 10 - 24 x 3/4
29	8049	1	Bowed washer				
30	1365	1	Square nut, 10 - 24	60	183689	1	Bearing, steering handle shaft
31	197105	1	Shaft, idle adjustment				
32	197507	2	Knob	61	224079	1	Steering handle, port
33	1621	1	Rod end clevis clip	62	183818	1	Bearing
					197756-1	1	Packing, support plate (not shown)
					85735	18	Seal, medallions (not shown)
					197248-2	1	Decal "Choke" (not shown)
					197394-1	1	Decal "Idle Adjustment" (not shown)
					210397-1	1	Decal "shift" (not shown)
					197894-2	1	Steering handle indicator (not shown)

# ENGINE COVER AND SUPPORT PLATE

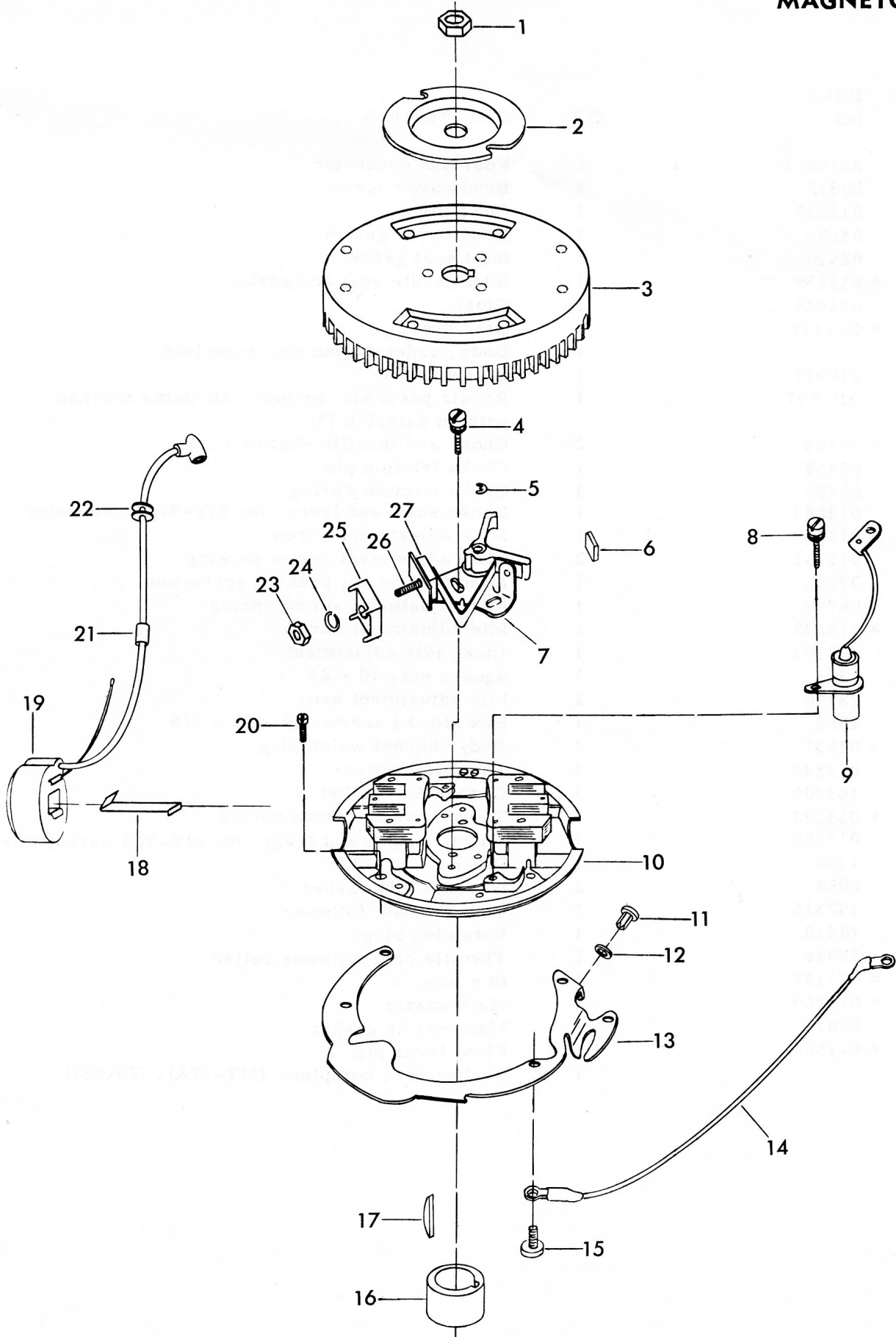


# Magneto

ILLUS. NO.	PART NO.	QTY.	DESCRIPTION
1	1352	1	Hex nut, 7/16 - 20
2	901456-1	1	Starter collar
3	59097	1	Flywheel
4	12170	4	Contact screw w/lockwasher
5	12097	2	Retaining ring
6	12228	1	Cam wiper felt
7	12153	2	Breaker point set
8	12083	2	Condenser screw w/lockwasher
9	12143	2	Condenser
10	A59095-2	1	Stator plate, w/coils, condensers, screws, points, and cam wiper felt
11	1717	1	Plasti-rivet
12	8025	1	Plain washer
13	197192-4	1	Throttle cam plate
14	289664	1	Lead wire ground
15	1075	4	Fill hd screw, 10 - 24 x 1/2
16	59002	1	Breaker cam
17	54498	1	Magneto key
18	12146	2	Coil wedge spring
19	A12231	2	Coil w/lead wire
20	1090	4	Fill hd screw w/lockwasher, 10 - 24 x 9/16
21	12141	1	Sleeve
22	12088	4	Grommet
23	12127	2	Stud nut
24	8055	2	Lockwasher
25	12128	2	Insulator, outside
26	12142	2	Connection stud
27	12129	2	Insulator, inside
	12091	1	Lead wire marker - top (not shown)
	K-750	2	Sparkie kit (not shown)
		1	Magneto, complete, FW-2680C, 59062-1

Order by Part Number and Name, giving Motor, Model and Serial Number

# MAGNETO

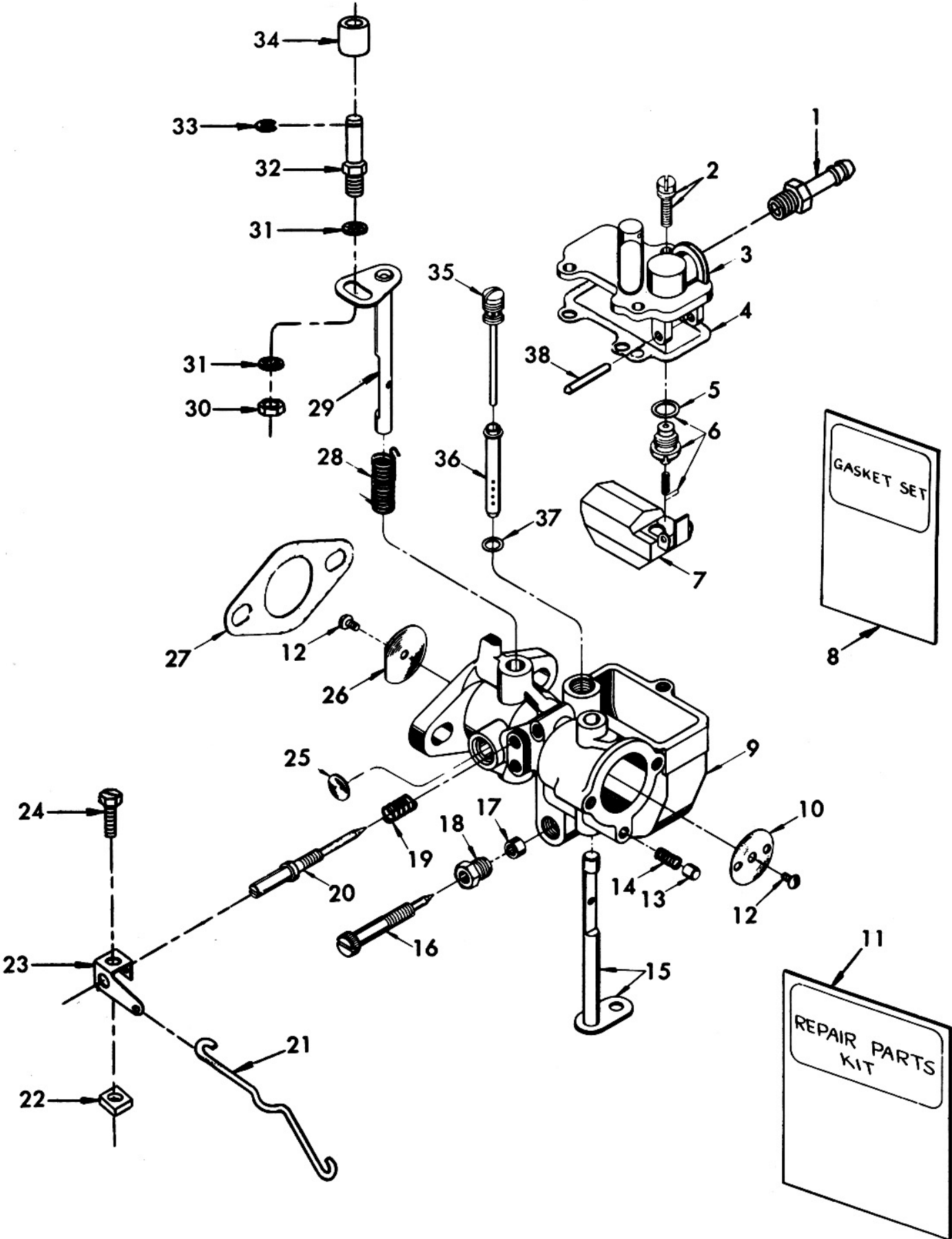


# Carburetor

ILLUS. NO.	PART NO.	QTY.	DESCRIPTION
1	27768-1	1	Fuel line connector
2	08315	3	Bowl cover screw
3	013237	1	Bowl cover
4	08658	1	Bowl cover gasket
5	02510	1	Inlet seat gasket
6	* 013239	1	Inlet needle seat and gasket
7	011928	1	Float
8	* GS-177	1	Gasket set
9		1	Body, order carburetor complete
10	010977	1	Choke shutter
11	RK-597	1	Repair parts kit, includes all items marked with an asterisk (*)
12	* 05204	2	Choke and throttle shutter screw
13	05454	1	Choke friction pin
14	08805	1	Choke friction spring
15	013883	1	Choke shaft and lever, for MT-97A carburetor
16	* 013258	1	Main adjustment screw
17	011351	2	Main adjustment screw packing
18	07282	1	Main adjustment packing screw nut
19	* 08793	1	Idle adjustment screw spring
20	* 013235	1	Idle adjustment screw
21	197193	1	Link, idle adjustment
22	1365	1	Square nut, 10 - 24
23	78190	1	Idle adjustment arm
24	1558	1	Hex slot hd screw, 10 - 24 x 3/8
25	* 02531	2	Body channel welch plug
26	013243	1	Throttle shutter
27	197906	1	Carburetor gasket
28	* 013232	1	Throttle shaft return spring
29	013885	1	Throttle shaft and lever, for MT-97A carburetor
30	1340	1	Hex nut, 10 - 32
31	8058	2	Int tooth lockwasher
32	197316	1	Throttle cam follower
33	78410	1	Retaining ring
34	78318	1	Throttle cam follower roller
35	* 011127	1	Idle tube
36	* 013259	1	Main nozzle
37	06076	1	Main nozzle gasket
38	* 011564	1	Float lever pin
		1	Carburetor, complete, (MT-97A), (291061)



# CARBURETOR



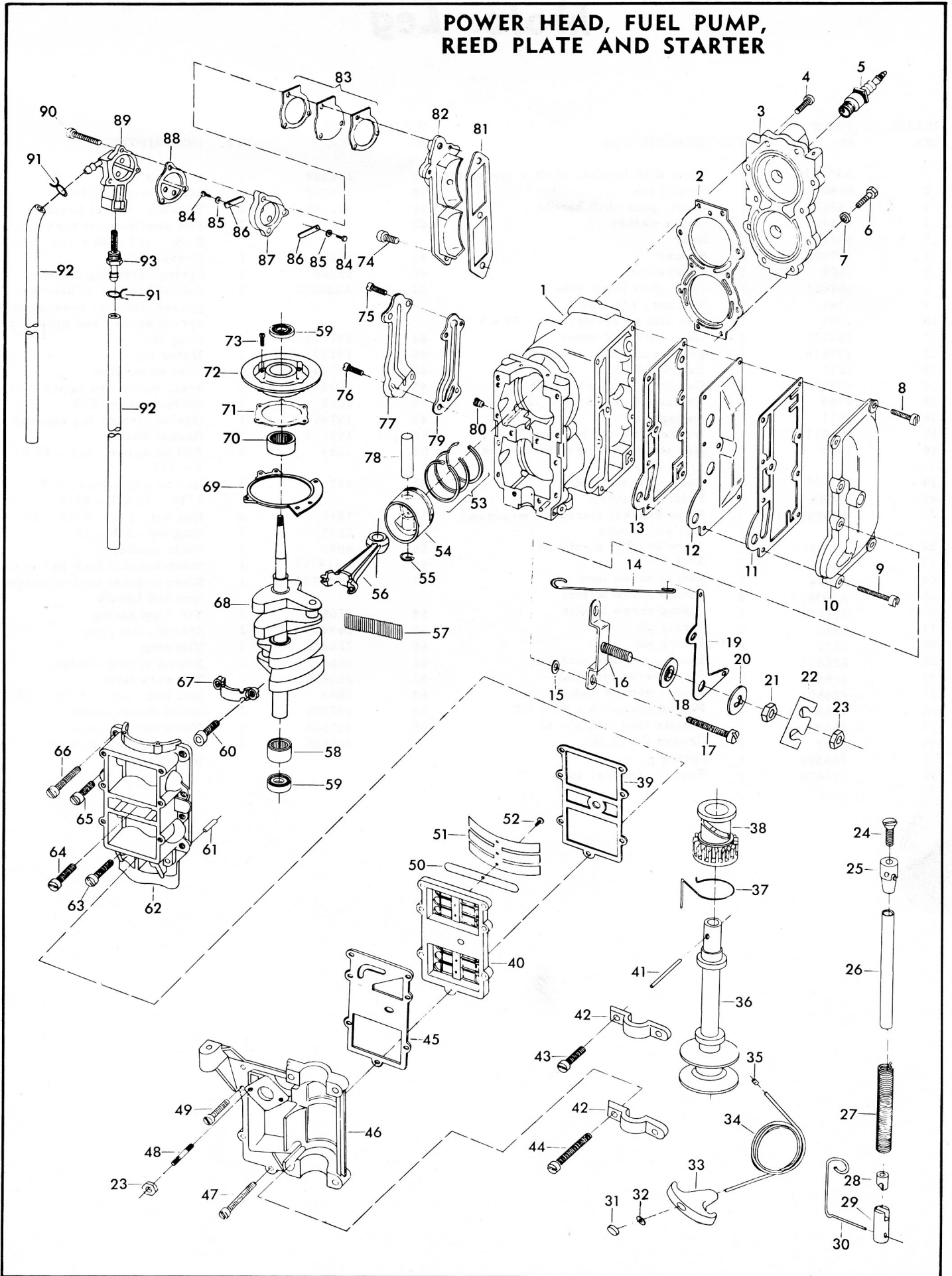
# Power Head, Fuel Pump, Reed Plate and Starter

ILLUS. NO.	PART NO.	QTY.	DESCRIPTION	ILLUS. NO.	PART NO.	QTY.	DESCRIPTION
1	* A291010	1	Cylinder w/crankcase cover, screws and dowel pin	47	1115	1	Fill hd screw, 12 - 24 x 1 - 1/4
2	571529-3	1	Cylinder head gasket	48	19209-2	2	Carburetor stud
3	291518	1	Cylinder head	49	1121	6	Fill hd screw, 12 - 24 x 7/8
4	1053	8	Fill hd screw, 1/4 - 20 x 1	50	26160-2	6	Reed
5	78227	2	Spark plug, J-4-J	51	26161	2	Reed stop
6	901938-1	10	Cylinder head screw	52	1295	6	Rd hd screw, 4 - 40 x 1/4
7	8025	10	Plain washer	53	* A761260-1	1	Piston ring set (6 per set)
8	1084	5	Fill hd screw, 10 - 24 x 5/8	54	* 64015-2	2	Piston
9	1069	5	Fill hd screw, 10 - 24 x 1 - 1/16	55	* 96-2	4	Lock ring
10	571152	1	Exhaust port cover	56	* 2A36016-3	2	Connecting rod w/cap and screws
11	50153	1	Gasket, exhaust port cover	57	* A36571-1	2	Connecting rod needle bearing (28 pe
12	571151	1	Exhaust port plate	58	* 291014	1	Bearing, crankshaft lower main
13	50154	1	Gasket, exhaust port plate	59	* 23146-3	2	Seal
14	197509	1	Link, magneto control lever	60	36634	4	Connecting rod screw
15	8013	2	Plain washer	61	* 1714	2	Dowel pin
16	A197440	1	Pivot pin w/retainer	62		1	Crankcase cover, order cylinder
17	1073	2	Fill hd screw, 10 - 24 x 1 - 1/4	63	* 1044	2	Fill hd cap screw, 1/4 - 20 x 1 - 3/8
18	183813	1	Bearing, magneto control lever	64	* 1100	2	Fill hd screw, 1/4 - 20 x 1 - 1/8
19	197525-1	1	Lever, magneto control	65	* 1628	6	Fill hd screw, 12 - 24 x 5/8
20	183282	1	Washer, magneto control lever	66	* 1111	2	Fill hd screw, 1/4 - 20 x 7/8
21	7019	1	Hex nut, 1/4 - 20	67		2	Connecting rod cap, order 2A36016- connecting rod
22	901834	1	Lead wire clip	68	* 50018-2	1	Crankshaft
23	1490	3	Hex nut, 1/4 - 20	69	73082	1	Magneto stator ring
24	1156	1	Flat hd screw, 1/4 - 20 x 1/2	70	55013	1	Bearing, crankshaft upper
25	901739	1	Starter rewind spring drive	71	224277	1	Gasket crankshaft bearing cage
26	901710	1	Starter rewind spring guide post	72	A54144	1	Crankshaft bearing cage w/bearing a
27	901970	1	Starter rewind spring	73	1075	4	Fill hd screw, 10 - 24 x 1/2
28	901737	1	Starter spring retainer	74	1110	2	Fill hd screw, 1/4 - 20 x 5/8
29	183971	1	Starter retainer extension	75	1089	3	Fill hd screw, 10 - 24 x 9/16
30	183455	1	Starter rope guide	76	1652	1	Fill hd screw, 10 - 24 x 11/16
31	51332	1	Starter rope handle plug	77	562471-1	1	Cylinder drain cover
32	8012	1	Plain washer	78	* 7017	2	Piston pin
33	51132-1	1	Starter rope handle	79	562472	1	Gasket, cylinder drain cover
34	A190232	1	Starter rope w/end	80	66679-1	1	Valve, cylinder drain
35	24333	1	Starter rope end	81	26223	1	Gasket, transfer port cover
36	183239-2	1	Starter spool	82	66222	1	Transfer port cover
37	901424-1	1	Starter pinion spring	83	2A24747-1	1	Fuel pump diaphragm w/gasket
38	40674-4	1	Starter pinion gear	84	1286	2	Pan hd screw, 4 - 40 x 3/16
39	23159	1	Gasket, reed plate	85	8003	2	Plain washer
40	A36158	1	Reed plate w/reeds, stops and screws	86	18160-1	2	Reed
41	40425	1	Starter pinion pin	87	A24757-3	1	Fuel pump reed plate w/reeds and sc
42		2	Starter bearing cap, order 2A197167 (adapter flange)	88	24748	1	Gasket, fuel pump
43	1111	3	Fill hd screw, 1/4 - 20 x 7/8	89	901746	1	Fuel pump cover
44	1056	1	Fill hd screw, 1/4 - 20 x 2	90	1107	1	Fill hd screw, 1/4 - 20 x 3/4
45	652404	1	Carburetor adapter plate	91	2706772	4	Fuel line clamp
46	2A197167-1	1	Carburetor adapter flange w/bearing cap, screws	92	A71754	2	Fuel line w/clamps
				93	901811	1	Fuel pump filter
					C291010	1	Cylinder complete, includes all item with an asterisk (*)
					G-118	1	Gasket set
					K-734	1	Engine touch-up paint spray bomb Frost White Flat
					K-938	1	Engine touch-up paint spray bomb Gray Green



Order by Part Number and Name, giving Motor, Model and Serial Number

### POWER HEAD, FUEL PUMP, REED PLATE AND STARTER

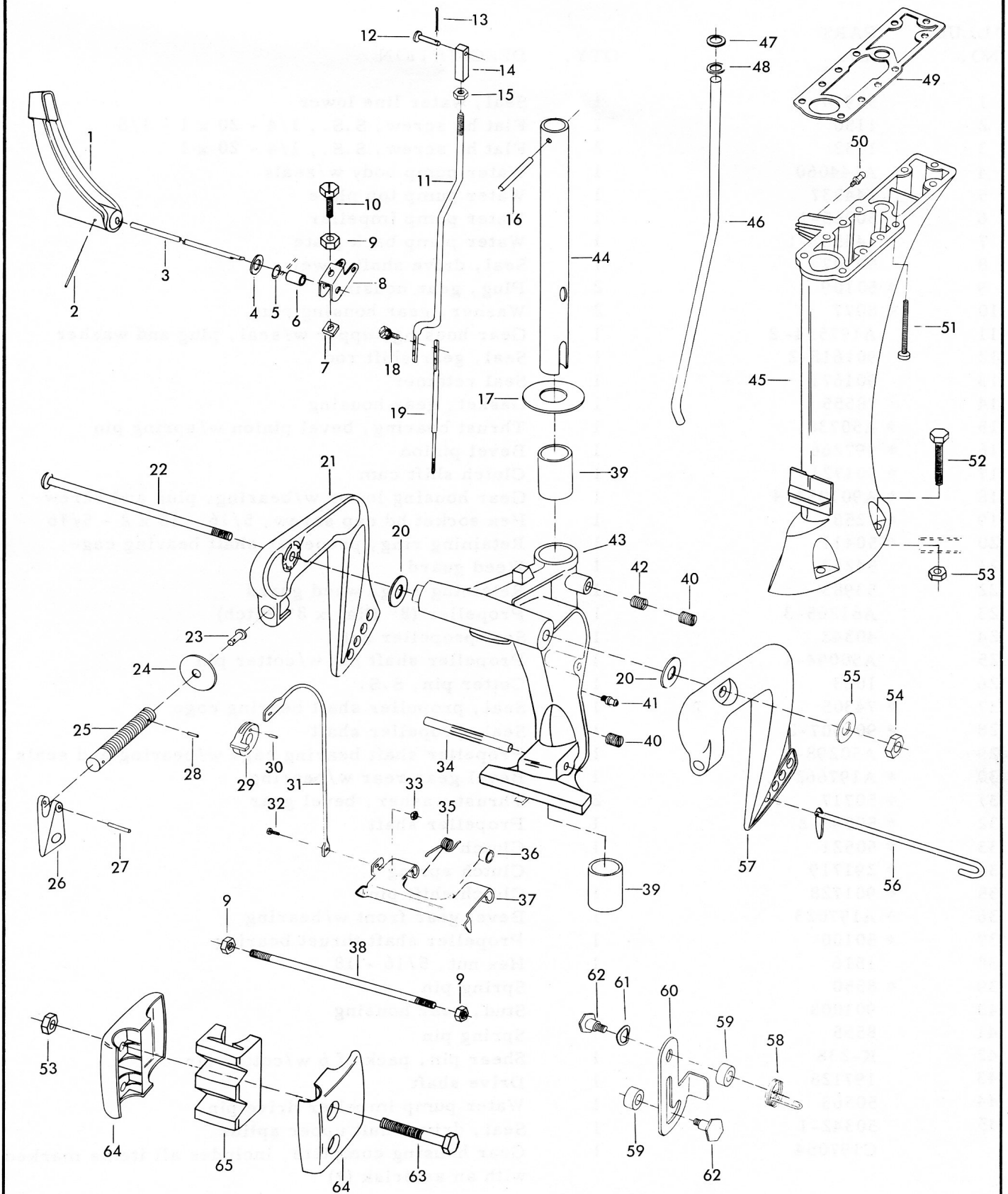


# Motor Leg

ILLUS. NO.	PART NO.	QTY.	DESCRIPTION	ILLUS. NO.	PART NO.	QTY.	DESCRIPTION
1	A197614	1	Gear shift handle, shaft & spring pin	37	226349	1	Reverse lock
2	8540	1	Spring pin	38	197211	1	Stud, stern bracket
3	197611	1	Shaft, gear shift handle	39	901169-1	2	Bearing, swivel bracket
4	154415	1	Nylon washer	40	1607	2	Slot headless set screw, S. S., 3/4 - 24 x 1/2
5	50342-1	1	Seal				
6	197902	1	Spacer	41	55274	1	Grease fitting
7	1608	1	Square nut	42	55300	1	Spring, steering friction
8	197621	1	Gear shift lever arm	43	A226072	1	Swivel bracket w/bearings grease fittings, reverse lock, spring spacer and groove pin
9	1341	3	Hex nut, 1/4 - 20				
10	1199	1	Hex slot hd screw, 1/4 - 20 x 1				
11	224615	1	Gear shift rod upper	44	197019	1	King pin
12	197519	1	Pin, gear shift rod coupling	45	197133-1	1	Motor leg
13	1014	1	Cotter pin, S.S.	46	197244	1	Inlet water line
14	197704	1	Coupling, gear shift rod	47	19342	1	Seal, water line upper
15	1349	1	Hex nut, S.S., 5/16 - 18	48	8038	1	Plain washer, S.S.
16	1611	1	Spring pin	49	197453	1	Gasket, motor leg exhaust
17	901011	1	Washer, swivel bracket	50	197274	1	Grease fitting
18	1655	2	Hex slot hd screw w/lockwasher 1/4 - 20 x 3/8	51	1604	8	Fill hd screw, 1/4 - 20 x 1 - 1/2
19	224705	1	Gear shift rod lower	52	1501	4	Hex hd cap screw, S.S., 5/16 - 18 x 1 - 9/16
20	28286	2	Friction washer				
21	A197032-1	1	Stern bracket starboard w/screw, foot and handle	53	1515	6	Hex nut, S.S., 5/16 - 18
22	197037	1	Stern bracket pivot bolt	54	1631	1	Stop nut, 3/8 - 16
23	66480	2	Stud	55	8039	1	Plain washer
24	24074	2	Clamp screw foot	56	A314113	1	Stern bracket lock bar w/end
25	A197073	2	Clamp screw w/foot	57	A197532-2	1	Stern bracket port w/screw, foot and handle
26	197075	2	Clamp screw handle	58	226544	1	Tilt stop spring
27	8555	2	Spring pin	59	269929	2	Spacer, tilt stop
28	8537	2	Spring pin	60	226426	1	Tilt stop
29	226827	1	Lever, reverse lock link	61	1666	1	Bowed spring washer
30	226466	1	Pin reverse lock link	62	269350	2	Tilt stop pivot
31	226591	1	Link, reverse lock	63	1603	2	Hex bolt, S.S., 5/16 - 18
32	1668	1	Pan hd screw, 6 - 32 x 3/8	64	197707	2	Shock mount cover
33	1669	1	Elastic stop nut, 6 - 32	65	197346	1	Shock mount lower
34	1667	1	Groove pin, S.S.		226585-1	1	Decal, "Tilt Release" (not shown)
35	226300	1	Spring				
36	226670	1	Spacer, reverse lock				

Order by Part Number and Name, giving Motor, Model and Serial Number

# MOTOR LEG



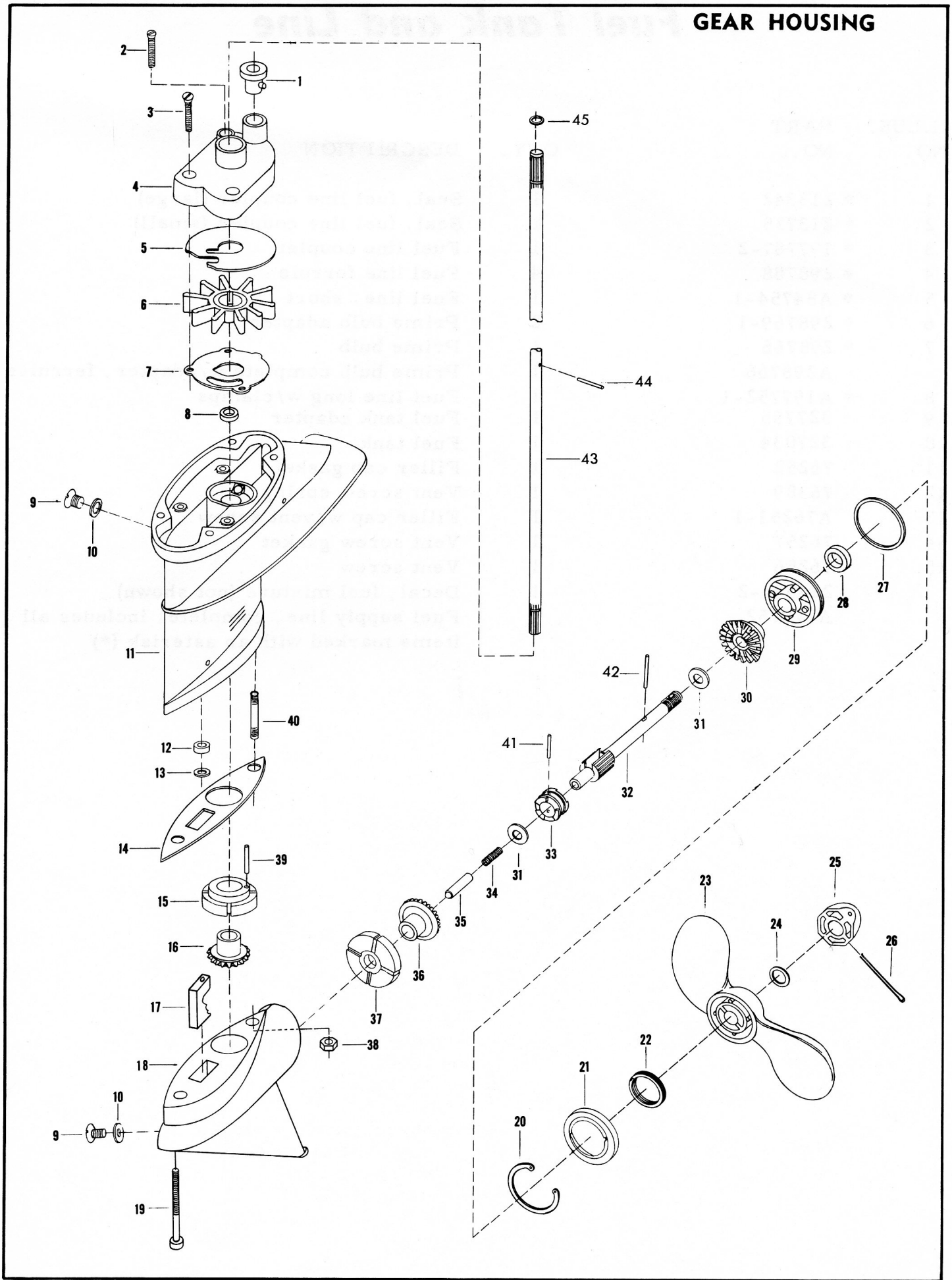
# Gear Housing

ILLUS. NO.	PART NO.	QTY.	DESCRIPTION
1	55914	1	Seal, water line lower
2	1150	1	Flat hd screw, S.S., 1/4 - 20 x 1 - 1/8
3	1138	2	Flat hd screw, S.S., 1/4 - 20 x 1
4	A144060	1	Water pump body w/seals
5	144537	1	Water pump top plate
6	50065-1	1	Water pump impeller
7	144562-1	1	Water pump back plate
8	50307	1	Seal, drive shaft lower
9	* 50109	2	Plug, gear housing
10	* 8077	2	Washer, gear housing plug
11	A197554-2	1	Gear housing, upper w/seal, plug and washer
12	901618-2	1	Seal, gear shift rod
13	901671	1	Seal retainer
14	78555	1	Gasket, gear housing
15	* A50738	1	Thrust bearing, bevel pinion w/spring pin
16	* 197266	1	Bevel pinion
17	* 901721	1	Clutch shift cam
18	* A901054-4	1	Gear housing lower w/bearing, plug and screw
19	* 1258	1	Hex socket hd cap screw, 5/16 - 18 x 2 - 5/16
20	* 50411	1	Retaining ring, propeller shaft bearing cage
21	54262	1	Weed guard
22	53983	1	Retaining ring, weed guard
23	A61265-3	1	Propeller (8" Dia. x 8" Pitch)
24	40342	1	Seal propeller nut
25	A50094-1	1	Propeller shaft nut w/cotter pin
26	1023	1	Cotter pin, S.S.
27	* 74305	1	Seal, propeller shaft bearing cage
28	* 901307-2	1	Seal, propeller shaft
29	* A50298-1	1	Propeller shaft bearing cage w/bearing and seals
30	* A197662	1	Bevel gear rear w/bearing
31	* 50717	2	Thrust washer, bevel gear
32	* 50098-2	1	Propeller shaft
33	* 50521	1	Clutch
34	* 291719	1	Clutch spring
35	* 901728	1	Clutch shift pin
36	* A197023	1	Bevel gear front w/bearing
37	* 50100	1	Propeller shaft thrust bearing
38	1516	1	Hex nut, 5/16 - 18
39	* 8550	1	Spring pin
40	901008	1	Stud, gear housing
41	8555	1	Spring pin
42	K-238	1	Shear pin, pack of 6 w/cotter pin
43	197128	1	Drive shaft
44	50563	1	Water pump impeller drive pin
45	50342-1	1	Seal, drive shaft upper spline
	C197054	1	Gear housing complete, includes all items marked with an asterisk (*)



Order by Part Number and Name, giving Motor, Model and Serial Number

# GEAR HOUSING



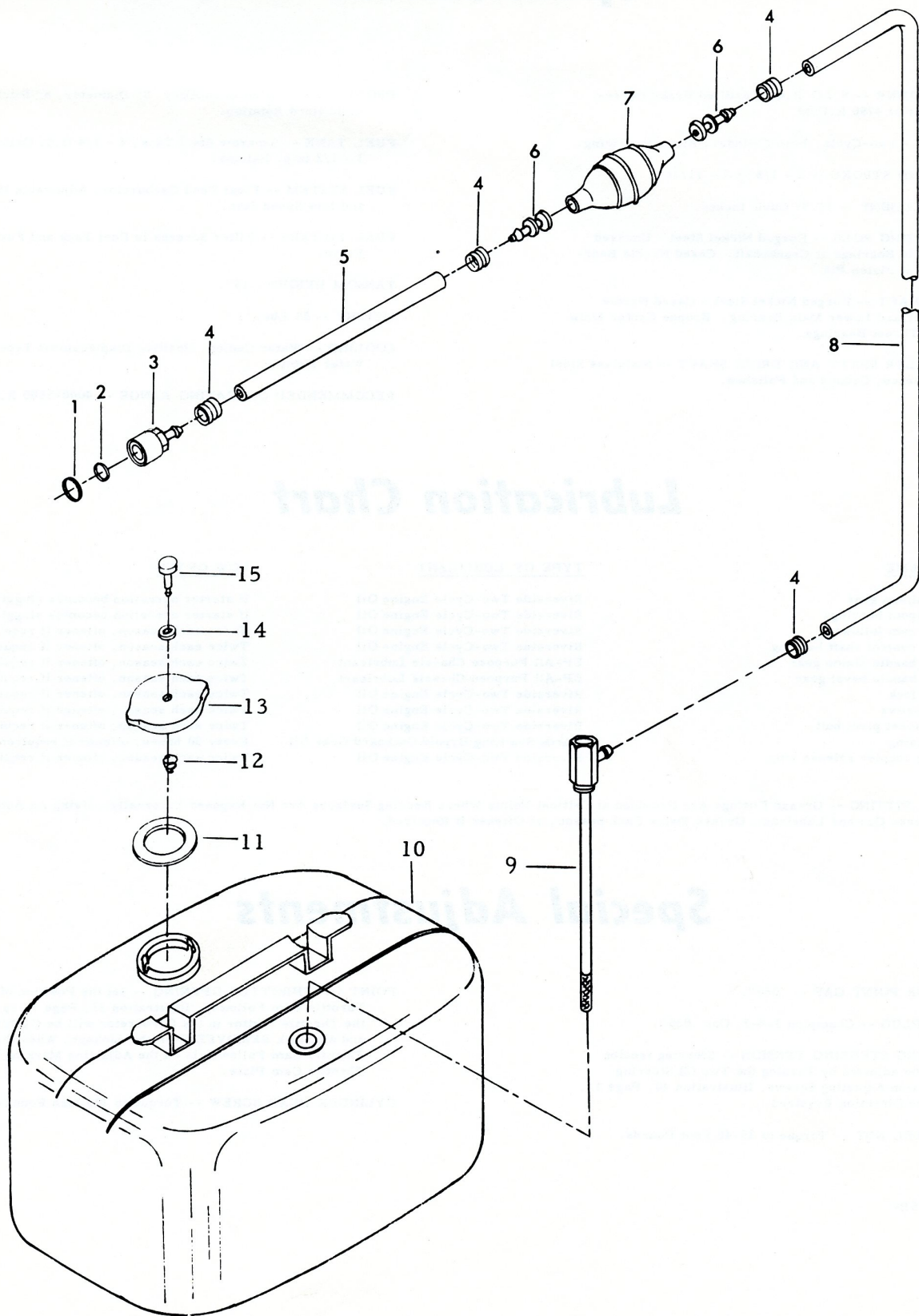
# Fuel Tank and Line

ILLUS. NO.	PART NO.	QTY.	DESCRIPTION
1	* 213342	1	Seal, fuel line coupler (large)
2	* 213735	1	Seal, fuel line coupler (small)
3	* 197787-2	1	Fuel line coupler
4	* 298788	4	Fuel line ferrule
5	* A84754-1	1	Fuel line, short
6	* 298769-1	2	Prime bulb adapter
7	* 298766	1	Prime bulb
	A298766	1	Prime bulb complete w/adapter, ferrule
8	* A197752-1	1	Fuel line long w/clamps
9	327755	1	Fuel tank adapter
10	327034	1	Fuel tank
11	76252	1	Filler cap gasket
12	76389	1	Vent screw spring
13	A76251-1	1	Filler cap w/vent screw
14	76257	1	Vent screw gasket
15	76256	1	Vent screw
	224394-2	1	Decal, fuel mixture (not shown)
	A178752	1	Fuel supply line, complete, includes all items marked with an asterisk (*)



Order by Part Number and Name, giving Motor, Model and Serial Number

### FUEL TANK AND LINE



# Specifications

HORSEPOWER -- 9.2 O.B.C. Certified Brake Horsepower at 4750 R.P.M.

MOTOR -- Two-Cycle, Twin Cylinder, Alternate Firing.

BORE AND STROKE -- 2 - 1/8" x 1 - 11/16".

DISPLACEMENT -- 11.97 Cubic Inches.

CONNECTING RODS -- Forged Nickel Steel - Uncased Needle Bearings at Crankshaft. Cased Needle Bearings at Piston Pin.

CRANKSHAFT -- Forged Nickel Steel - Cased Needle Upper and Lower Main Bearing. Bronze Center Main and Thrust Bearings.

PROPELLER SHAFT AND DRIVE SHAFT -- Stainless Steel Hardened, Ground and Polished.

PROPELLER -- Aluminum Alloy, 8" Diameter, 8" Pitch Right Hand Rotation.

FUEL TANK -- Separate Steel Tank, 4 - 1/4 U.S. Gallons, 3 - 1/2 Imp. Gallons.

FUEL SYSTEM -- Float Feed Carburetor, Adjustable High and Low Speed Jets.

FUEL FILTERS -- Filter Screens in Fuel Tank and Fuel Pump.

TANSOM HEIGHT - 15".

WEIGHT -- 55 Lbs.

COOLING -- Water Cooled, Positive Displacement Type Water Pump.

RECOMMENDED OPERATING RANGE -- 4000-5500 R.P.M

## Lubrication Chart

<u>PART NAME</u>	<u>TYPE OF LUBRICANT</u>	<u>HOW OFTEN</u>
Starter pinion gear	Riverside Two-Cycle Engine Oil	If starter operation becomes sluggish
Starter spool bearings	Riverside Two-Cycle Engine Oil	If starter operation becomes sluggish
Throttle cam follower	Riverside Two-Cycle Engine Oil	Twice each season, oftener if required
Magneto control shaft bearing	Riverside Two-Cycle Engine Oil	Twice each season, oftener if required
Steering handle pinion gear	EP-All Purpose Chassis Lubricant	Twice each season, oftener if required
Steering handle bevel gear	EP-All Purpose Chassis Lubricant	Twice each season, oftener if required
Reverse lock	Riverside Two-Cycle Engine Oil	Twice each season, oftener if required
Clamp screws	Riverside Two-Cycle Engine Oil	Twice each season, oftener if required
Stern bracket pivot bolt	Riverside Two-Cycle Engine Oil	Twice each season, oftener if required
Gear housing	Wards Sea King Hypoid Outboard Gear Oil	Every 30 hours, oftener if required
Fuel line coupler release ring	Riverside Two-Cycle Engine Oil	Twice each season, oftener if required

GREASE FITTING -- Grease Fittings Are Provided at Critical Points Where Bearing Surfaces Are Not Exposed Externally. Using An Automot Type Grease Gun and Lubricant, Grease Twice Each Season, or Oftener If Required.

## Special Adjustments

BREAKER POINT GAP -- .020".

SPARK PLUG -- Champion J-4-J, Gap .030".

ADJUSTING STEERING TENSION -- Steering tension can be adjusted by Turning the Two (2) Steering Friction Adjusting Screws, Illustration 40, Page 11, in the Direction Required.

FLYWHEEL NUT -- Torque to 35-40 Foot Pounds.

60H - 886B\*

POINT OF THROTTLE OPENING -- Set the Position of the Throttle Cam Follower, Illustration 32, Page 7, so that the Throttle Shutter in the Carburetor will be CLOSED and all Slack REMOVED from the Linkage, When the Throttle Cam Follower is on the Adjusting Mark on the Throttle Cam Plate.

CYLINDER HEAD SCREW -- Torque to 120 Inch Pounds.